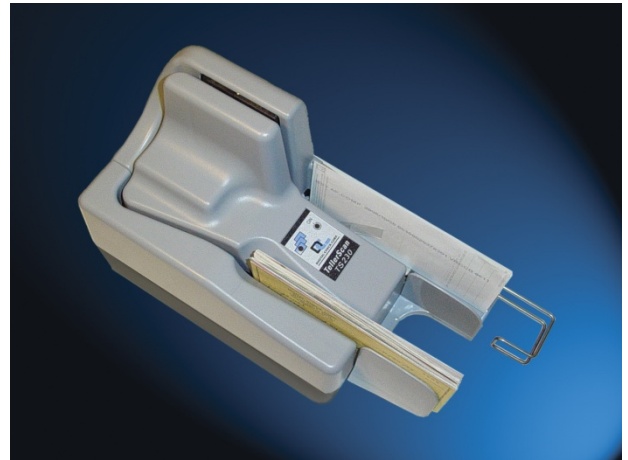


Digital Check's TellerScan[®] 230

Higher Performance for Cheque 21[®] Systems

Features:

- High-quality, affordable, continuous feeder
- 100 checks per minute with high-duty cycles
- Ergonomic design and quiet operation
- Highest quality front and back images for better CAR/LAR
- Improved Best Read[®] check MICR reading for accuracy
- Upstream inkjet facilitates Cheque 21[®] image validation
- Cheque 21[®] System and SplitPath[™] Process compliant
- Advanced Unit Exchange for up to 5-years through Aqubanc



Designed for smaller to multi-tier volumes

The TellerScan 230 (TS230) leverages Digital Check Corporation's experience with the successful and highly reliable TS220E platform embodies the most advanced design for check-sized image capture on the market today. Designed expressly for smaller to multi-tier volumes, the integrated continuous feeder delivers the highest quality images for both sides of a check or Reply Device in less than one second. The TS230 is available in 35, 65 and 100 images per minute models: Aqubanc highly recommends the TS230-100 to deliver the most value and flexibility as your gift volume grows.

Ergonomic design

The TS230's quiet operation does not distract from office activities while using just 5" x 8½" of desktop space. A short "U" shaped transport path, with separate front and rear scan heads, provides smooth, quiet operation along with high reliability. The jam resistant drop-in feeder is ergonomically designed to ensure fast and easy operation, so the Gift Processing operator can continue to add documents even after the imaging process has started.

Highest quality images

Dual tricolor imaging modules provide the highest image definition available. As each check is scanned on the TS230, it is analyzed using adaptive thresholding into black and white using specialized software technology to sharpen the edges of characters. This provides a clear, easy to read image that supports Cheque 21[®] Image Quality and Usability standards that are combined with anti-skew support to give superior numeric courtesy and handwritten legal amount check recognition ("CAR/LAR"); and, intelligent recognition of machine printed information.

Improved Best Read[®] check MICR reading

The TS230 advances Digital Check's Best Read[®] MICR reading technology with improved algorithms. The integrated magnetic hardware-based reader passes the check's MICR scan line information to the controlling Cheque 21[®] System PC, using a high-speed USB2.0 link for decoding and maximum accuracy through OCR enhanced multiple verification techniques.

Advanced Unit Exchange

Peace of mind comes with knowing a replacement TS230 will arrive quickly so Gift Receipting or Gift Processing can work with maximum uptime. The TS230 Advanced Unit Exchange is a preferable, efficient alternative to extended and time-wasting depot maintenance, and, is available exclusively for 5-years through Aqubanc for non-profit and charitable organizations.

Upstream Inkjet Facilitates Cheque 21[®] imaging

The programmable inkjet can endorse dates, sequential or transaction numbers on the back of the checks and Reply Devices before TS230 image capture. The pre-image, non-contact inkjet uses a high capacity HP C6602A inkjet cartridge for tracking processed checks / cheques at the earliest point. The crisp legible endorsement is subsequently image captured and is ideal for full compliance with US Check 21 Federal Reserve Bank rules as well as future Canadian Payment Association's Cheque 21[®].

AQUBANC[®] LLC
STEWARDSHIP YOUR RESOURCES[™]

800.350.4720

www.Aqubanc.com

Cheque21@aqubanc.com

CHEQUE 21[®] SYSTEMS

Digital Check's TellerScan[®] 230

Higher Performance for Cheque 21[®] Systems

AQUBANC[®] LLC
STEWARDS YOUR RESOURCES[™]

800.350.4720

www.Aqubanc.com

Cheque21@aqubanc.com

Specifications:

Unit Size: 5.1" x 8.6" (plus paper guides add 2 to 3 inches)

Paper Size: Typically personal-to-business check sizes

Document Height: 2.12" - 4.17" (54-106mm)

Document Length: 3.19" - 8.97" (80-228mm)

Document Weight: 16-120 lb. (60-500 grams/sq. meters)

Scanning Method: Concurrent Two-sided Duplex

Image Creation: 2 x 850 cell, 108mm CIS

Light Source: Tricolor LED

Endorser: Programmable inkjet, prior to scan, 12 dots/channel height, supports variable fonts and BMP graphic printing

Estimated Yield: From 5-7M characters per HP cartridge

Cartridge: Hewlett Packard C6602A

Start Pack: [Aqubanc exclusive](#) includes Cleaning Kit and Cartridges

In-Line MICR Recognition: MICR recognition firmware for E13B (USA & UK), CMC7 (European), CMC0 standards, Magnetic MICR waveform passed to Cheque 21[®] System PC, MICR code line data available as a separate file or in image header, MICR optical verification built into the interface

Transport Speed: 19.7" (50 cm) per second

Manufacturer's Scanning Performance:

The typical scan speed is under one second to under $\frac{2}{3}$'s second per 6" document (personal check). Depending upon the PC speed, RAM, disk drive rotation, type of endorsement and/or recognition utilized performance may decrease from a maximum range at 65 to 100 documents per minute on USB2.0 connection

Standard Interface:

Standard USB2.0 (Aqubanc recommended)

Compatible with USB1.1 with performance limitations

Image Capture:

24-bit (16m shades) – color; 8-bit (256 levels) - grayscale
1-bit black and white, or, 4-bit grayscale, API software selectable

Image Resolution:

200 x 200 dpi (508 x 508 dots/cm)

100 x 100 dpi (254 x 254 dots/cm)

200 x 100 dpi (508 x 254 dots/cm)

(V x H) software selectable through API

Image Format with Automatic Image Cropping:

TIFF Group IV (G4) for electronic check/cheque deposit submission to comply with US Check 21 and Canadian Cheque 21[®] rules

Diagnostic Features

Diagnostic Tools: Allows for full testing of scanner functionality

Serviceability: Flash EEPROM allows easy upgrade of functionality

Firmware

Uses the TS230 firmware.bin with API 8.7 or later (Firmware file resides on the Cheque 21[®] System PC)

Software Tools & Support Services

Software Tools: API Toolkit 32 bit

Required Cheque 21[®] System Operating System: Windows XP

Required DLL: TS2dll.dll which comes with API v8.7 or later

Environmental, Reliability, & Electrical Features

Electrical: Power consumption: 45VA

Input Voltage: 100 to 240 VAC (+/- 10%), 50/60hz

Separate Standard Power Supply: Auto sensing for voltage

Product Life & Recommended Duty Cycles

Designed for a useful life of over 5,000,000 documents

Duty Cycle TS230-35: Under 300 transactions per day

Duty Cycle TS230-65: 100 – 800 transactions per day

Duty Cycle TS230-100: 200 – 2,000 transactions per day

Mean Time To Repair (MTTR): 15 minutes

Environmental and Certifications

Operating Temperature: 60° - 90° F (15° - 32° C)

Operating Humidity: 35-85% non-condensing

Certifications: UL, CE

Unit Dimensions

Height / Depth - 6.6" (17cm) / 5.1" (13cm)

Length - 8.6" (21.7cm) to 11" with paper guides extended

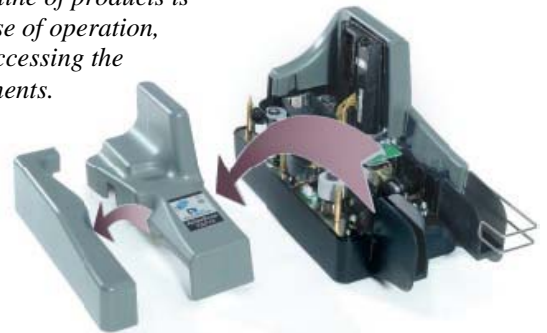
Weight - 4.4 lbs. (2kg) / 8.0 lbs shipping weight

Annual Maintenance Choices

Advanced Unit Exchange – 5 years [Exclusively from Aqubanc, LLC](#)

Extended Warranty with Depot Service - Up to 4 years

The TellerScan line of products is designed for ease of operation, cleaning, and accessing the internal components.



**DIGITAL
CHECK**